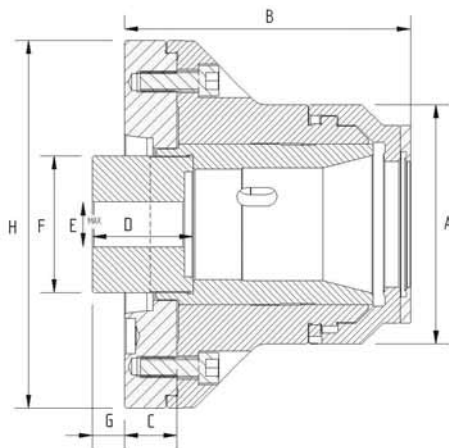


## KITAGAWA EUROPE Collet Chucks

Kitagawa Europe (UK) manufacture a wide range of Collet Chucks, the most popular is the QCRL Range with its quick release nose cap for fast collet changeover.

- Quick Change Collet Chuck for first or second operation
- Ideally suited for use with barfeeders
- Fixed Length Collet – no part movement
- Quick Change Cap with safety lock
- Suits Multibore or Spring Collets
- Exceptional accuracy in compact body
- Wide range of other models including Pull-Back and 5C Chucks.



Exploded view of QCRL Collet Chuck

SPECIFICATIONS		QCRL 42 DIN	QCRL 54 Inch	QCRL 60 DIN	QCRS 66 Inch	QCRL 80 DIN	QCRS 80 Inch
Gripping Range	Max	42	2 1/8"	60	2 5/8"	80	3 1/8"
	Min	4	1/16"	4	1/8"	12	1/2"
Collet Increment	mm	2	1/8"	2	1/8"	3	1/8"
Sleeve Stroke	mm	7	7	7	10	11	11
Max Drawbar Pull	kN	25	30	30	38	45	45
Max Grip Force	kN	55	60	60	84	78	78
Max Speed	rpm	7100	6300	6300	4500	4500	4500
Net Weight	kg	13.5	29	29	24	37	29
Matching Cylinder	Kitagawa	S1246	S1552/75	S1552/75	S1875	S2091	S2091
Collet Ref	Multibore	M673	D120	M677	D285	J660	N175
	Spring	173E	N-853	185E	N/A	193E	N/A

**Note:** Example part number: QCRL60A6 for a 60mm capacity collet chuck with A2-6 spindle mount.  
QCRL54 and 60 Collet Chucks can be supplied with optional 42mm Collet Reduction Sleeve and Cap.

DIMENSIONS (in mm)		QCRL42			QCRL60			QCRS66		QCRL80	QCRS80	
Mount	140	A5	A6	170	A5	A6	A8	220	A8	A8	A8	
A		113			143			162		196	196	
B	149	143	143	177	186	171	171	158	151	217	171	
C	31.5	25	25	36.5	45	36.5	36.5	n/a	n/a	n/a	n/a	
D		60			60			80		80	80	
E (max)		M58 x 1.5			M75 x 1.5			M90 x 2		M90 x 2	M90 x 2	
F		65			82			100		100	100	
G (max)	17	23	23	15	25	21	21	19	25	40	20	
G (min)	10	16	16	5	15	11	11	9	15	28	8	
H		165				220			230		220	220