



**CHUCK**

# 3-Jaw Air-Operated Self Contained Chuck (Long Stroke)

## UBR series

### Dual Speed Jaw Stroke

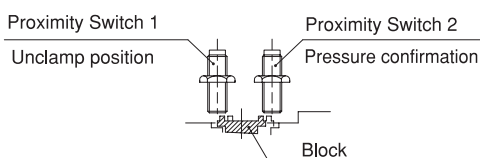
Large chuck best suited for pipe processing

- Built-in Pneumatic Cylinder
- 2-stage stroke  
Initially, jaws move quickly, slowing just before gripping thus reducing overall gripping time.
- Optimum for Jaw position confirmation

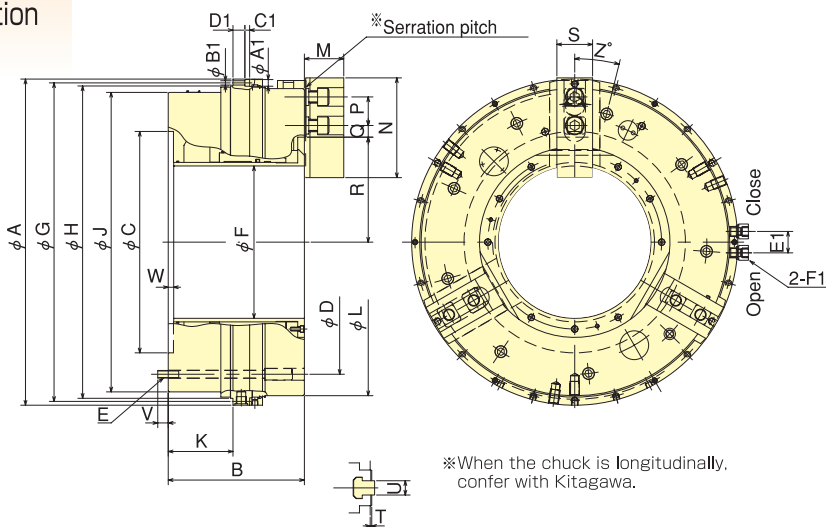


Standard Chuck

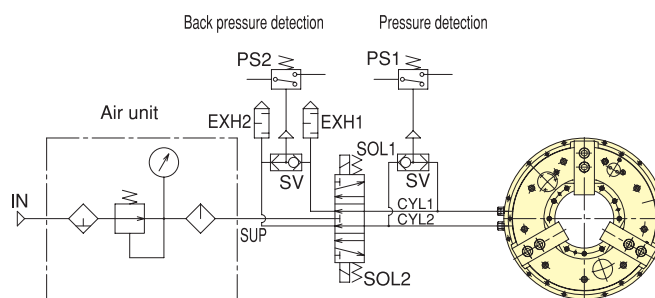
### Dimensional Drawings



1. Unclamp position confirmation by proximity switch 1.
2. Clamp position confirmation by proximity switch 2.



### Recommended air circuit diagram



### Dimensions

Model	A1	B1	C1	D1	E1	F1
UBR450K/P	11	6.6	6.6	25	45	RC 3/8
UBR560K/P	14	9	9	20	45	RC 1/2
UBR630K/P	14	9	10	25	45	RC 1/2
UBR710K/P	17	11	11	33	45	RC 1/2

Model	A	B	C (H7)	D	E	F	G	H (H7)	J	K	M		N	P	Q max.	Q min.	R max.	R min.	S	T	U	V	W	Z	
											mm	inch													
UBR450K/P	494	232	275	373	9-M12	181	481	470	431	111.5	441	67.3	68.7	165	43	37.1	16.1	140.5	120.5	62	3.3	25.5	17	6	20
UBR560K/P	626	275	375	485	6-M16	275	610	595	556	130	568	70.5	71.9	180	60	32.65	18.37	196.5	171.5	65	3.3	25.5	24	11	40
UBR630K/P	698	286	465	555	9-M16	320	682	669	629	136	645	81.3	82.7	209.5	60	38.5	20.5	220.5	195.5	75	3.3	30	22	11	14
UBR710K/P	790	286	520	620	9-M16	375	770	745	702	136	714	81.3	82.7	209.5	60	50.5	23.5	248	223	75	3.3	30	24	11	24

\*The specification of serration pitch can be selected. Type UBRXXXX: millimeter, Type UBRXXXXP: inch

### Specifications

Model	Centre hole dia mm	Gripping range mm Max. Min.	Jaw Stroke Rapid Gripping (diameter) mm	Plunger Stroke mm	Max. Gripping Force at air pressure kN (kgf)	Max. Speed min <sup>-1</sup>	Weight (with std. Aluminum jaw) kg	Moment of inertia kg·m <sup>2</sup>	Max pressure MPa (kgf/cm <sup>2</sup> )	Air consumption per 10mm (at air pressure 0.6MPa (6.1 kgf/cm <sup>2</sup> )) l
UBR450K/P	181	441 127	26 / 14	53	100.0 (10200)	1300	216.0	5.480	0.6 (6.1)	4.83
UBR560K/P	275	568 235	33 / 17	53.5	120.0 (12230)	1100	380.0	17.500	0.6 (6.1)	7.17
UBR630K/P	320	645 235	33 / 17	53.5	147.0 (15000)	1000	520.0	30.600	0.6 (6.1)	9.27
UBR710K/P	375	714 290	33 / 17	53.5	162.0 (16520)	900	595.0	42.600	0.6 (6.1)	11.10

\*Maximum speed is shown with each value under air pressure of 0.6MPa, using standard soft jaw and fixed air supply ring. If the supply ring is not fixed, each value in ( ) is applied.

\*Gripping force of a jaw is one third of max. gripping force.

\*Standard accessories : Soft jaw, air pressure gauge, tools of a set.