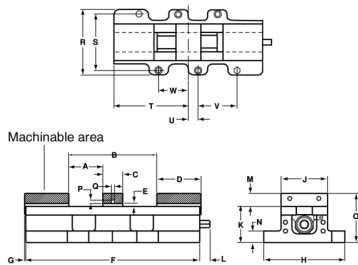


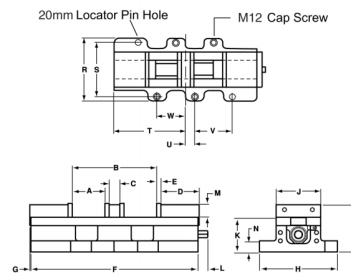
### Twin Vise TV4/100 & TV6/150

- Fastest quick change jaw system
- Fully machinable soft jaws
- Full jaw travel
- Hardened and ground steel work surface
- Chip flow through design
- Interlocking base design
- Mounts directly to locator plate
- Hydraulic operation also available

#### Soft Jaw Version



#### Hard Jaw Version



### Dimensions and Capacities - Hard & Soft Jaw Versions

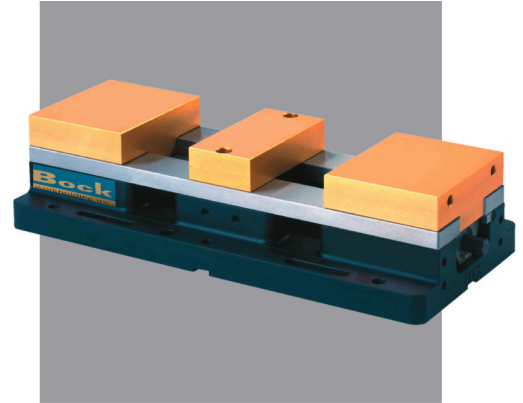
Dimensions	TV4/100H in / mm	TV4/100S in / mm	TV6/150H in / mm	TV6/150S in / mm
A Jaw Capacity*	2.94 / 75	2.20 / 56	4.00 / 102	3.50 / 89
B Single Station Capacity*	7.60 / 193	7.00 / 178	10.00 / 254	10.00 / 254
C Fixed Jaw Width	0.96 / 24	2.50 / 64	0.96 / 24	3.00 / 76
D Jaw Carrier Length	3.44 / 87	4.00 / 102	4.50 / 114	5.00 / 127
E Jaw Plate Thickness	0.38 / 10	0.25 / 6	0.50 / 13	0.25 / 6
F Base Length	15.00 / 381	15.00 / 381	20.00 / 508	20.00 / 508
G Jaw Overhang	0.10 / 3	0.10 / 3	- / -	- / -
H Base Width	7.00 / 177	7.00 / 177	9.00 / 227	9.00 / 227
O Base Height	4.63 / 118	4.63 / 118	4.88 / 124	4.88 / 124
J Jaw Width	4.00 / 102	4.00 / 102	6.00 / 152	6.00 / 152
K Height Base to Rail	3.37 / 86	3.37 / 86	3.37 / 86	3.37 / 86
L Lead Screw	0.80 max / 20 max	0.80 max / 20 max	0.80 max / 20 max	0.80 max / 20 max
M Height	- / -	1.25 / 32	0.24 / 6	1.50 / 38
N Base Flange Thickness	1.25 / 32 /	1.25 / 32	1.25 / 32	1.25 / 32
P Non Machineable Area	- / -	0.81 / 21	- / -	1.00 / 25
Q Non Machineable Area	- / -	0.50 / 13	- / -	0.60 / 15
R Base Width	7.00 / 177	7.00 / 177	9.00 / 227	9.00 / 227
S Center Distance	6.00 / 150	6.00 / 150	8.00 / 200	8.00 / 200
T Center Line to End	7.50 / 191	7.50 / 191	10.00 / 254	10.00 / 254
U Center to Bolt Hole	1.00 / 25	1.00 / 25	1.00 / 25	1.00 / 25
V Center Bolt/dowel	4.00 / 100	4.00 / 100	2.00 / 50	2.00 / 50
W Center Line to bolt hole	3.00 / 75	3.00 / 75	2.00 / 50	2.00 / 50
Weight	30lbs / 14 kg	30 lbs / 14 kg	65 lbs / 30 kg	65 lbs / 30 kg

\*unmachined jaw capacity

## Twin Vise - Straight Base Version

Standard version with flat clamping edge for direct installation on most machine tables.

- Fastest quick change jaw system
- Full jaw travel
- Hardened and ground steel work surface
- Chip flow through design
- Hydraulic operation also available
- Available in 4"/100mm and 6"/150mm
- Choose from hard or soft jaws

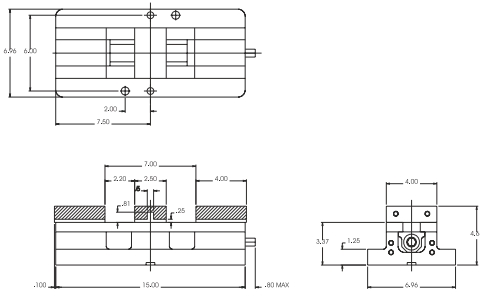


### Twin Straight Base Vise

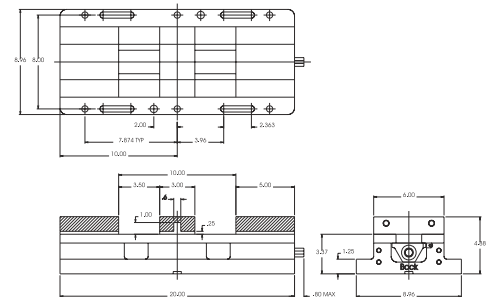
TV4/100SST: 4"/100mm

TV6/150SST: 6"/150mm

#### TV4/100SST Dimensions



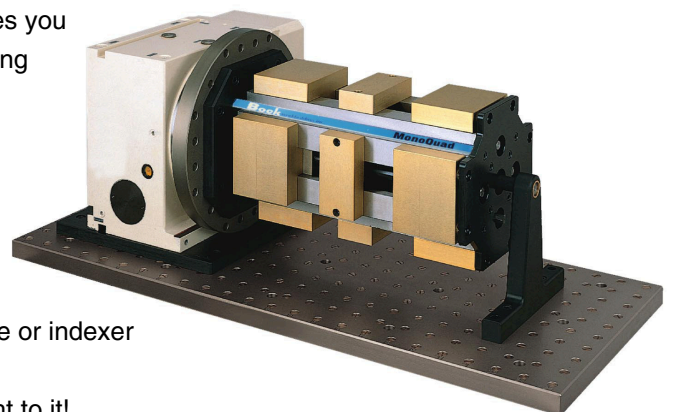
#### TV6/150SST Dimensions

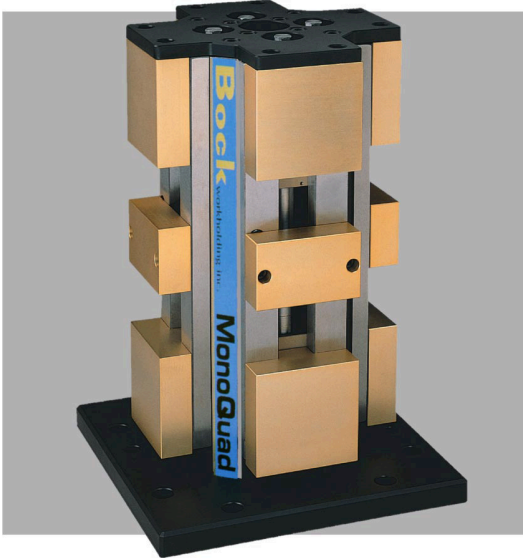


## Indexer Systems

Mounting our Quad unit to your rotary table gives you many of the advantages of a horizontal machining center on your vertical.

- Utilize your rotary table as a multi-station fixture for vertical machining centers
- Eliminate handling, reduce setups
- Reduce machining costs
- Indexer system can be built for any rotary table or indexer
- Holds 4 or 8 parts utilizing standard soft jaws
- All standard Bock jaws/accessories mount right to it!





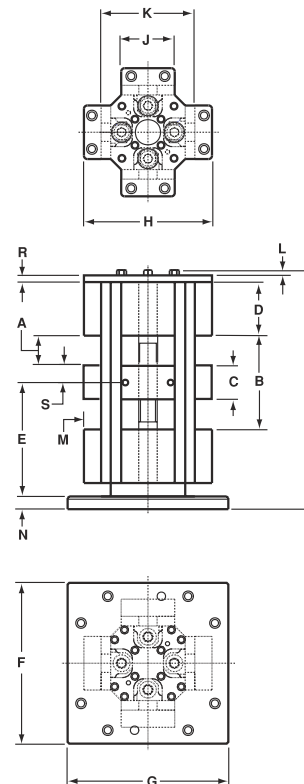
### MonoQuad Systems

- Standard version with 8 clamping positions.
- Fastest quick change jaw system
- Fully machinable soft jaws
- Full jaw travel
- Hardened and ground steel work surface
- Chip flow through design
- Mounts directly to locator plate or pallet

MonoQuad is available in 4"/100mm and 6"/150mm.  
 Low Profile systems are also available.  
 Contact us for additional information.

Dimensions and Capacities		
Dimensions	MQS4.8/100.8 in / mm	MQS6.8/150.8 in / mm
A Jaw Capacity*	2.25 / 57	3.50 / 89
B Single Station Capacity*	7.00 / 178	10.00 / 254
C Fixed Jaw Width	2.50 / 64	3.00 / 76
D Jaw Length	4.00 / 102	5.00 / 127
E Base to Center of Fixed Jaw	8.50 / 216	11.00 / 279
F Base Length	12.00 / 305	12.00 / 305
G Base Width	12.00 / 305	12.00 / 305
H Overall Width	9.58 / 243	11.50 / 292
J Jaw Width	4.00 / 102	6.00 / 152
K Width Rail to Rail	7.00 / 178	8.50 / 216
L Lead Screw Hex	0.80 max / 20 max	0.80 max / 20 max
M Jaw Height	1.25 / 32	1.50 / 38
N Base Flange Thickness	0.95 / 24	0.95 / 24
P Overall Height	18.25 / 464	23.25 / 591
R Top Plate Thickness	0.50 / 13	0.50 / 13
S Center of Fixed Jaw to Face	1.25 / 32	1.50 / 38
Weight	100 lbs / 45 kg	200 lbs / 91 kg

\*unmachined jaw capacity



Included adapter plate fits  
 Bock grid pattern, 80mm  
 & 100mm machine pallets.